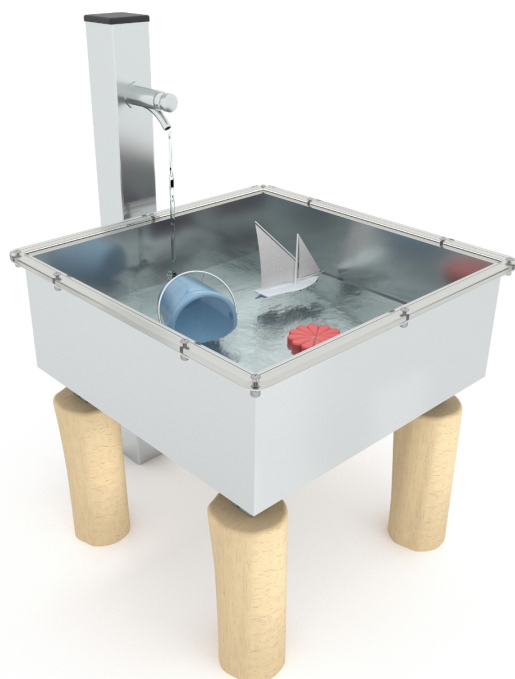


### ROBINIA RB2851



+1



12,6 m<sup>2</sup>

#### Material specification

- Construction made of Robinia - very durable acacia wood with a diameter of ~ 14 cm without sharp edges, resistant to weather conditions,
- 
- Screws covered with plastic caps and/or stainless steel screws,



Facilitating disability



easy access



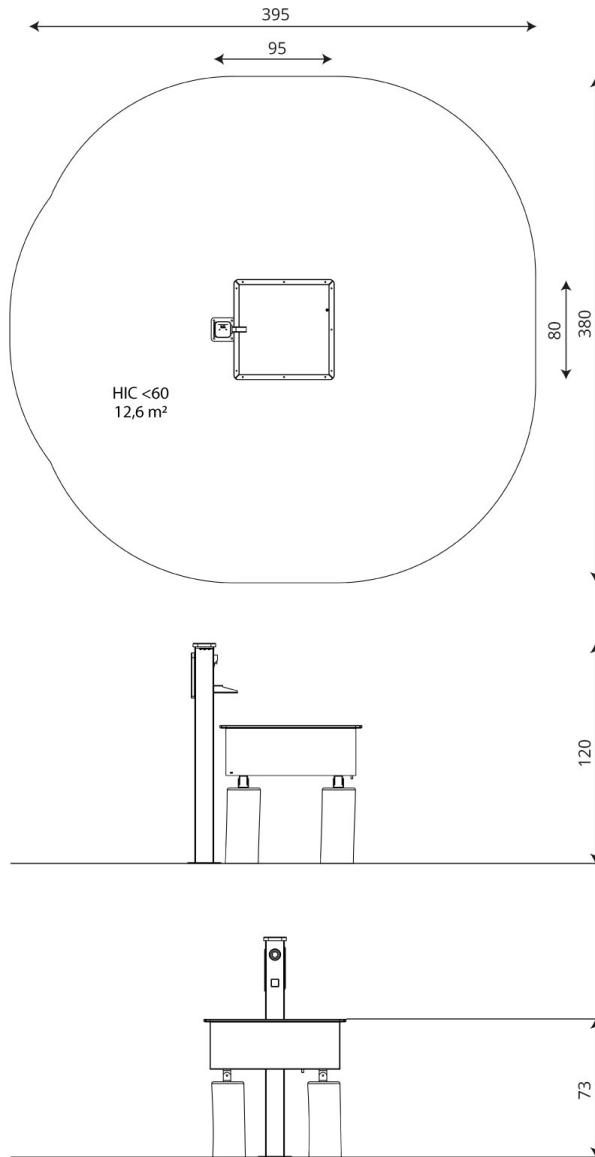
Intellectual development



le sensoriel



thinking



## Product technical sheet

# ROBINIA RB2851

### Product data

Length	95 cm
Width	80 cm
Total height	120 cm
Age group	+1 years
Safety zone	12,6 m <sup>2</sup>
Free fall height	< 60 cm
In accordance with norm EN	1176-1:2017
Weight of the heaviest part	15 kg
Availability of spare parts	YES

Data is subject to change without prior notice.

### Additional information

- equipment adapted for the disabled; intended for public playgrounds;
- anchoring on flat surface, 80/70 cm deep;
- render is for reference only, the actual appearance of the equipment and its color may vary;

## Guarantee

- 30** 30 year guarantee - Structural strength of steel and stainless steel components
- 15** 15 year guarantee - Structural failure of steel and stainless steel, for dynamic equipment
- 10** 10 year guarantee - Structural failure of high density polyethylene and high pressure laminates components
- 5** 5 year guarantee - Corrosion of stainless steel and hot dip galvanized and powder coated components; against bark beetles and rot in case of wooden structural elements

Detailed information in the guarantee card

## WIN PLAY GROUP

Add: Building E, Wisniowy Business Park, UI Ilzecka 26, 02-135, Warsaw, Poland

Tel : +48 221 530 191

Email: [info@playground.com.pl](mailto:info@playground.com.pl)

### Surfaces according to EN 1176-1:2017

	Description (mm)	Layer thickness (cm)	Maximum fall heights (cm)
Turf/ top layer of soil (A,B,C)	-	-	≤100
bark (A,C)	Particle size from 20 to 80	30	≤200
		40	≤300
woodchips (A,C)	Particle size from 5 to 30	30	≤200
		40	≤300
sand or gravel (A,C)	Particle size from 0,25 to 8	30	≤200
		40	≤300
synthetic attested (A,B,C)	Tested according to EN 1177		< 60

### Amount of safe surface corresponding with free fall height:

HIC <60 12,6 m<sup>2</sup>

Data is subject to change without prior notice.

